



SIGNATURE SERIES  
/ MADISON 28

Extended over two beautiful levels, this striking design accommodates the needs of a modern family with an airy, open flow throughout the home. This four bedroom home with generous alfresco and kids retreat is perfectly designed to cater for shared moments and quiet escapes.



COUNTRY FACADE

/ FACADE OPTIONS



CITY

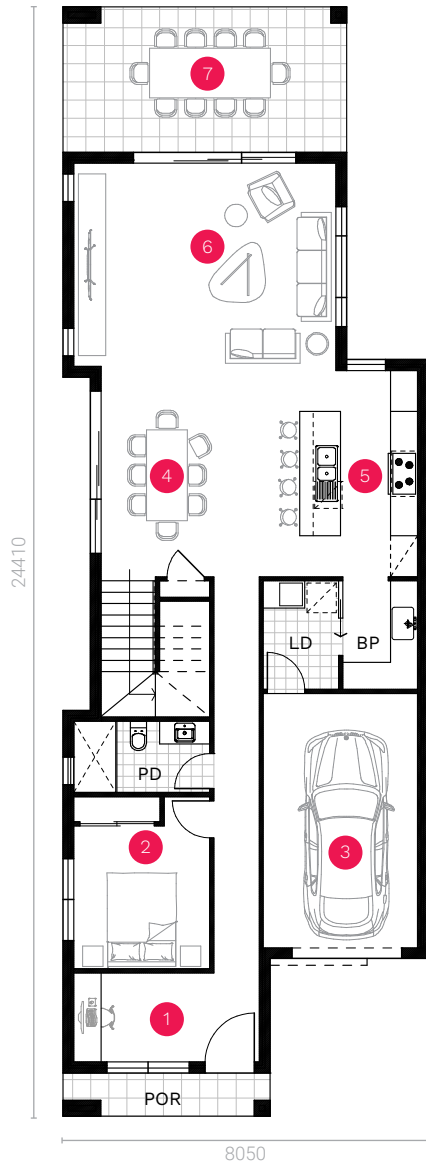


COASTAL

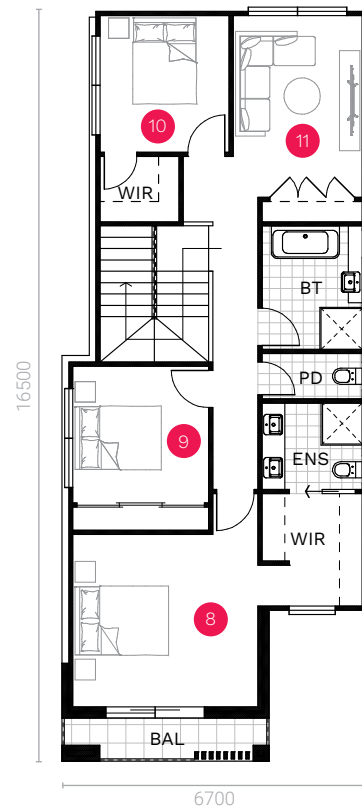


HAMPTONS

# /MADISON 28



GROUND FLOOR



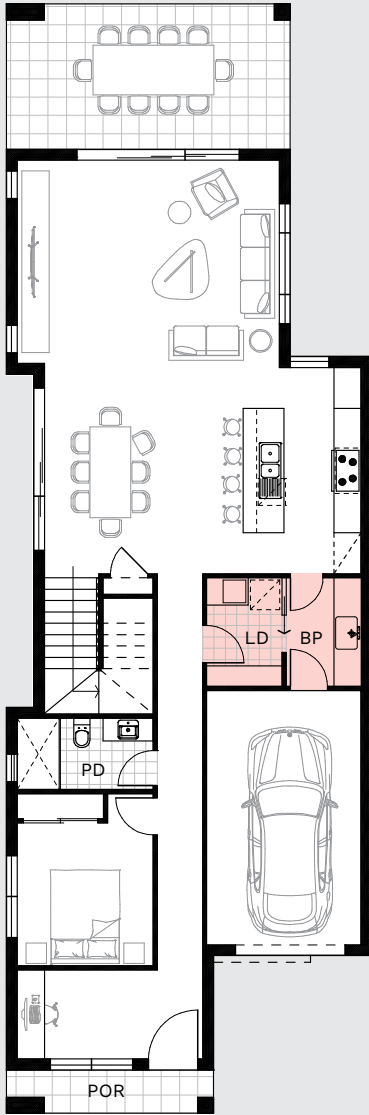
FIRST FLOOR

\*Standard floor plan based on Coastal façade.

<b>Ground Floor</b>	120.50 sqm	<b>1. Study</b>	3.08 x 1.96 m	<b>8. Master Bedroom</b>	4.08 x 3.80 m
<b>Garage</b>	21.20 sqm	<b>2. Guest Bedroom</b>	2.99 x 3.15 m	<b>9. Bedroom 2</b>	2.99 x 3.01 m
<b>Porch</b>	4.30 sqm	<b>3. Garage</b>	3.40 x 5.60 m	<b>10. Bedroom 3</b>	2.84 x 3.01 m
<b>Alfresco</b>	20.00 sqm	<b>4. Dining</b>	4.37 x 4.54 m	<b>11. Rumpus</b>	2.84 x 4.00 m
<b>First Floor</b>	94.50 sqm	<b>5. Kitchen</b>	2.60 x 4.54 m		
<b>Balcony</b>	4.30 sqm	<b>6. Living</b>	5.77 x 4.56 m		
<b>TOTAL</b>	<b>264.80 sqm   28.50 sq</b>	<b>7. Alfresco</b>	6.25 x 3.20 m		

POR - Porch, PD - Powder Room, LD - Laundry, BP - Butler's Pantry, ENS - Ensuite, WIR - Walk-in Robe, BT - Bathroom, BAL - Balcony

# / DESIGN OPTIONS

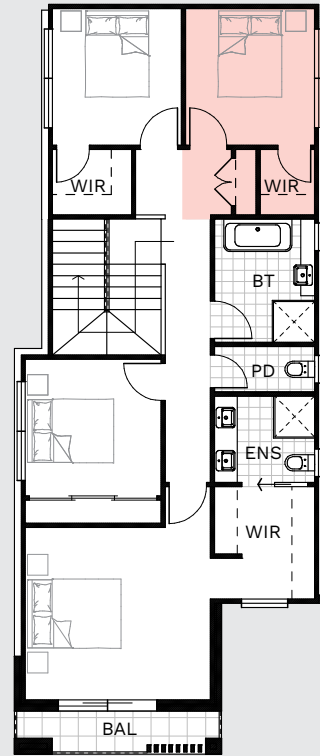


## GROUND FLOOR

### Alternate Laundry/Butler's Pantry

Laundry - 2.39 x 1.66 m

Butler's Pantry - 2.39 x 1.65 m



## FIRST FLOOR

### 5<sup>th</sup> Bedroom

2.84 x 3.10 m



1800 667 844 | [NORTHHOMES.COM.AU](http://NORTHHOMES.COM.AU)

---

**Disclaimer:** The information contained in this document is for marketing purposes only and does not form part of the contract of sale. Although all efforts have been made to ensure that the information provided is accurate and in accordance with the provisions of the contract of sale, changes may be made during construction and dimensions, areas, fittings, finishes and specifications are subject to change without notice. Any aspects, views and perspectives disclosed in this brochure are indicative only. North Homes reserves the right to alter designs and specifications without notice at any time. All graphics depicting the houses, landscaping and shared and public spaces are indicative only. Furniture and fittings depicted are not included with any sale and purchasers must refer to the contract of sale for the list of inclusions. The position of furniture and fittings should not be taken to be indicative of power points, TV connections and other amenities. All interested parties are directed to rely on their own enquiries and consult their professional adviser in relation to the terms and materials which are included in the contract of sale. All reasonable care has been taken in the preparation of this brochure, but the vendor and its appointed agents disclaim all liability should any information conveyed by or contained within differ from the contract of sale or the actual constructed development. BL374999C