



SIGNATURE SERIES

/ CHARLOTTE 35

A breathtaking five bedroom home, complete with a grand balcony that hints at the spectacular design within. Light-filled corridors conveniently connect living spaces and with multiple rumpus rooms, a study nook and generous alfresco area, this home is the epitome of contemporary family living.



/ FACADE OPTIONS



CITY

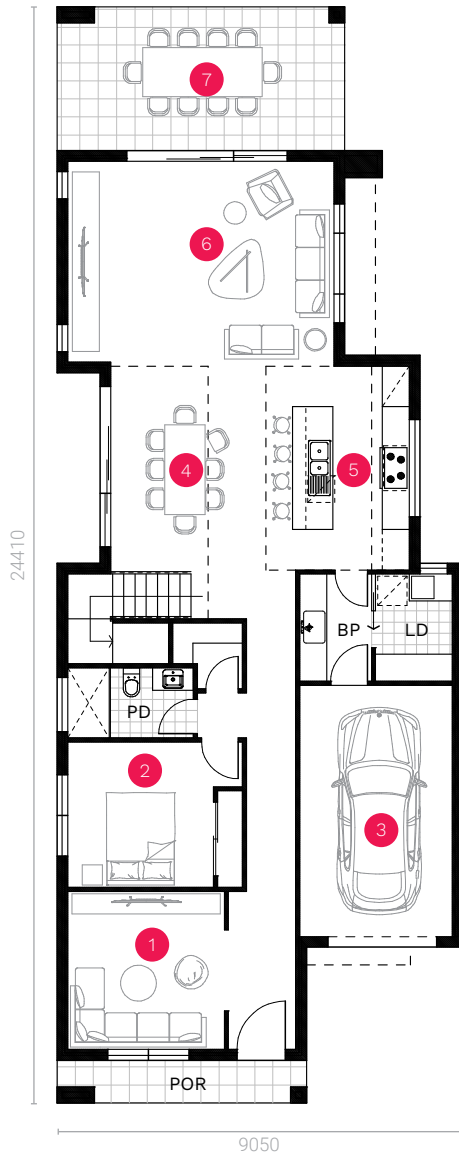


COASTAL

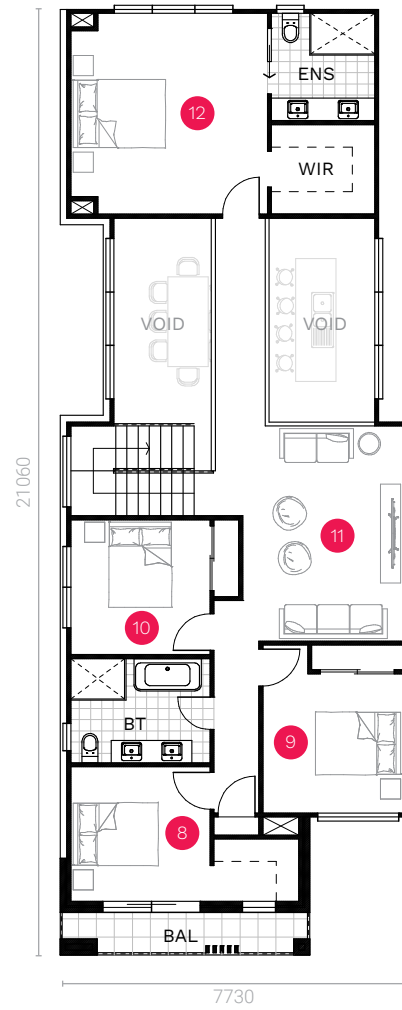


HAMPTONS

/ CHARLOTTE 35



GROUND FLOOR



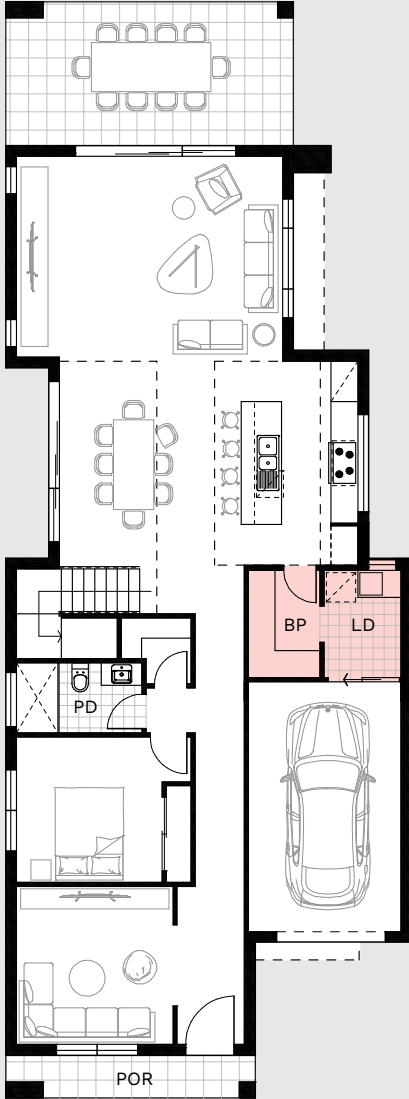
FIRST FLOOR

*Standard floor plan based on Coastal façade.

Ground Floor	133.30 sqm	1. Multi Room	3.49 x 3.52 m	8. Bedroom 2	3.10 x 3.00 m
Garage	21.20 sqm	2. Guest Room	3.25 x 3.24 m	9. Bedroom 3	3.12 x 3.10 m
Porch	5.30 sqm	3. Garage	3.40 x 5.60 m	10. Bedroom 4	3.10 x 3.00 m
Alfresco	20.50 sqm	4. Dining	4.05 x 4.63 m	11. Rumpus	3.57 x 4.79 m
First Floor	141.10 sqm	5. Kitchen	2.60 x 4.54 m	12. Master Bedroom	4.38 x 4.47 m
Balcony	5.30 sqm	6. Living	5.93 x 4.56 m		
TOTAL	326.70 sqm 35.20 sq	7. Alfresco	6.41 x 3.20 m		

POR - Porch, PD - Powder Room, LD - Laundry, BP - Butler's Pantry, ENS - Ensuite, WIR - Walk-in Robe, BT - Bathroom, BAL - Balcony

/ DESIGN OPTIONS

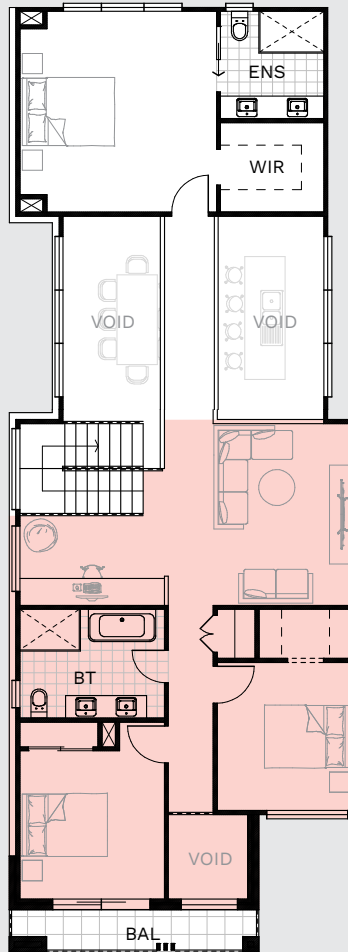


GROUND FLOOR

Alternate Laundry/Butler's Pantry

Laundry - 2.39 x 1.60 m

Butler's Pantry - 2.39 x 1.71 m

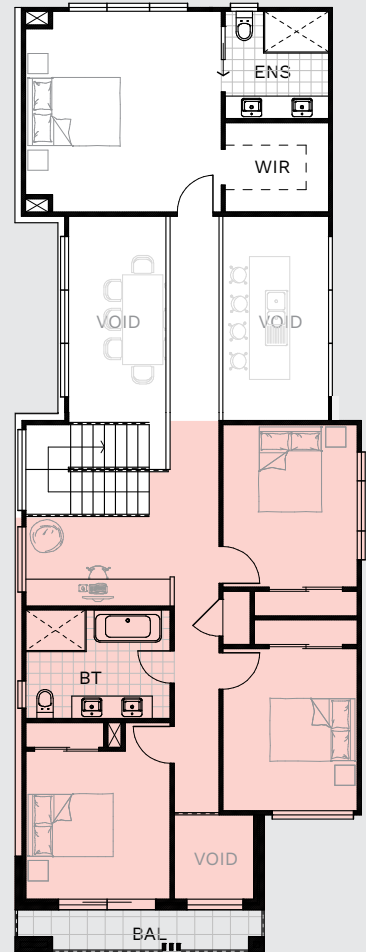


FIRST FLOOR

Study + Rumpus

Study - 3.31 x 2.05 m

Rumpus - 4.09 x 4.05 m



FIRST FLOOR

5th Bedroom + Study

Bedroom 3 - 3.00 x 3.63 m

Bedroom 4 - 3.00 x 3.63 m

Study - 3.31 x 2.05 m



1800 667 844 | NORTHHOMES.COM.AU

Disclaimer: The information contained in this document is for marketing purposes only and does not form part of the contract of sale. Although all efforts have been made to ensure that the information provided is accurate and in accordance with the provisions of the contract of sale, changes may be made during construction and dimensions, areas, fittings, finishes and specifications are subject to change without notice. Any aspects, views and perspectives disclosed in this brochure are indicative only. North Homes reserves the right to alter designs and specifications without notice at any time. All graphics depicting the houses, landscaping and shared and public spaces are indicative only. Furniture and fittings depicted are not included with any sale and purchasers must refer to the contract of sale for the list of inclusions. The position of furniture and fittings should not be taken to be indicative of power points, TV connections and other amenities. All interested parties are directed to rely on their own enquiries and consult their professional adviser in relation to the terms and materials which are included in the contract of sale. All reasonable care has been taken in the preparation of this brochure, but the vendor and its appointed agents disclaim all liability should any information conveyed by or contained within differ from the contract of sale or the actual constructed development. BL374999C